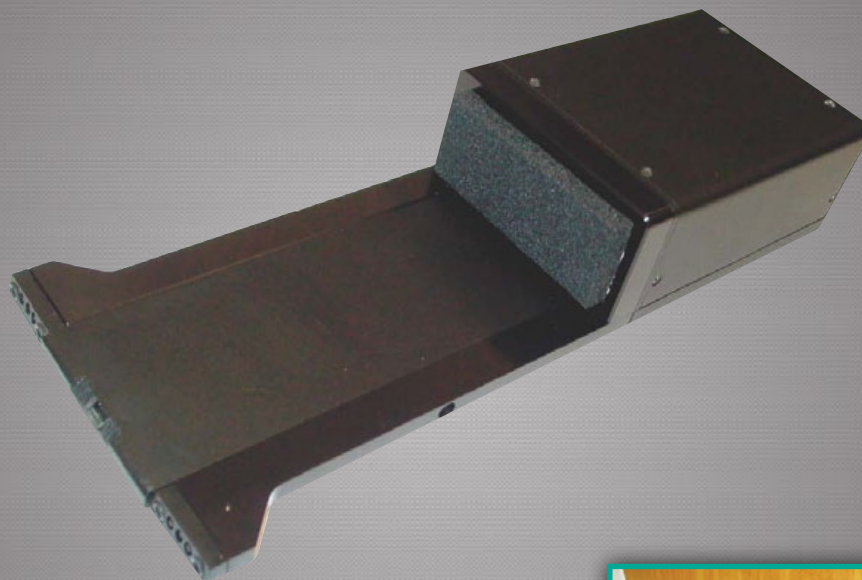


Zistos Under Door Camera



Dual View Under Door Camera

The "Dual View" Under-the-Door Camera (model ZDV) is a valuable extension of any tactical system. It provides a safe and covert view both forward-looking into a room and backward-looking up at the door.

Features:

- Two high-resolution, miniature CCD cameras
- Digital image enhancement in low light
- Forward looking camera with wide angle lens
- Upward looking camera sensor to view knob, door frame, barricades or IEDS
- Infrared LED illumination provides a clear video image in total darkness
- Integrated miniature microphone
- Audio enhancement circuitry amplifies low sounds while suppressing loud sounds
- Requires only a 0.25" (6.4mm) door-to-floor clearance

Specifications:

- 2x 6.3 mm (0.25) in black & white Super-HAD CCD
- 0.005 LUX rating
- 400 lines of resolution
- 70° field of view
- 25.4 cm (10 in) to infinity depth-of-field

Options:

- Optional wireless audio/video transmission
- Also available without audio

