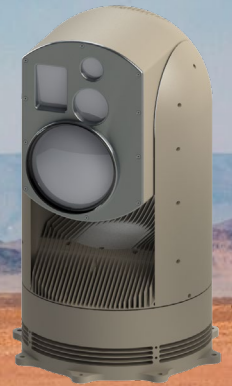


CS 8042HD

Border / Coastal Surveillance / Mobile Surveillance & Intelligence

c/w HD Uncooled Thermal Imaging and Day camera

CS 8000 Series



Electro-Optical / Infra-Red camera system

c/w Full HD: Best Uncooled Thermal Imaging Performance
CURRENT SECURITY electro-optical infrared cameras are the new generation of rugged and low maintenance turrets for land-based missions. The **CS 8042** is a single payload integrating a **High-Definition LWIR uncooled thermal imager** and **High-Definition Day/Low light camera** for border, coastal surveillance, as well as mobile surveillance & intelligence, and critical infrastructure surveillance applications. It is controlled through IP network on board or remotely. This COTS system is built to MIL Std.

APPLICATIONS

- Land Based Security
- Coastal surveillance
- Border surveillance
- Critical and Infrastructure Surveillance Applications
- Port Security
- Facility Protection
- Wind Turbine Fields

BENEFITS

- **Rugged & low maintenance** design
- **Zooms 28x** in HD LWIR Uncooled Thermal and 360x in HD day
- **Detects** a NATO target over 20km, night and day
- **Provides a clear, highly detailed image**, in HD day camera, even into the digital zoom range
- **Day Camera selection:** HD, 4K, 800mm or 1000mm
- **Increases object detection** in low level of light with best of class low light sensitivity
- **Tracks** third party sensor targets
- **Video Tracking**
- **Streams H.264 (HD)** video with PiP or two video streams and **communicates digitally** over IP network (Ethernet)
- **Outputs video in dedicated coax cable in SDI**
- **Enables Picture in Picture (PiP)** of two live video signal outputs (zoom synchronized or independent)
- **Single LRU** with no junction boxes or interface modules simplifies installations and retro fits, while reducing maintenance
- **Standard mounting and cabling** for all CS 8000 series enables ease of payload swaps and future upgrades
- **Designed to withstand marine environmental conditions** and proven by over 15 years and hundreds of successful operating installations worldwide

CURRENT Scientific Corporation – Tel: +1 604 461 5555 – sales@currentcorp.com

www.currentcorp.com



CURRENT

CS 8042HD

SYSTEM FEATURES

HD UNCOOLED THERMAL CAMERA		THREAT CONFIRMATION & INTELLIGENCE
Spectral range:	8 – 14 μm Uncooled thermal imager	
Sensor type:	HD LWIR (InSb FPA)	
Resolution:	1024x768 pixels (outputted on 16:9 HD wide screen)	
Field of View:	26.8° (wide) to 3.3° (narrow)	
Focal length:	40-300mm	
f/stop:	f1.5	
Zoom:	7x continuous optical, 4x digital	
Frequency:	30 fps, full frame rate for export	
Detection range ¹ :	NATO target to over 20km / Human to over 8km	
HD DAY / LOW LIGHT CAMERA		
Sensor type:	1/2.8" CMOS	
Field of View:	63° to 2.3° FoV in HD mode , 1080p30	
Optical zoom:	30x continuous	
Digital zoom:	12x continuous	
Window coating:	Hydrophobic	
Alternate sensor:	4K, 800mm or 1000mm	
LOW LIGHT HD CAMERA (FUNCTION)		
Sensor type:	1/2.8" CMOS	
Low light sensitivity:	0.0015 Lux in B&W mode	
RADAR, GROUND SIGNALS TRACKING & THE THIRD-PARTY SENSOR		
Slew-to-cue allows target detected from the Radar & Ground signals to be tracked automatically by the EO/IR. Interface between Radar, Ground signals over NMEA0183 communication standard in RS232 or RS422, through supplied Network Interface Box. GPS data is also fed through NMEA 0183 communication to register and display the position in Latitude, Longitude, Date and Time. Interface to other sensors as required.		
VIDEO TRACKING		
Automatic pursuit of an object of interest or threat selected on the display by the operator, without any continuous input. Both the infrared and day sensors automatically track the target, even with small obstructions in their path.		
CONTROLLER: HARDWARE OR GUI, IP BASED AND REMOTE-CONTROLLED SOLUTIONS		
<ol style="list-style-type: none"> 1. Video GUI with optional USB joystick (two-button joystick or Rugged Rigid Grip) 2. Control GUI (Graphical User Interface), either on dedicated touchscreen display (Panel PC) or as pop up window in PC; with optional USB joystick (two-button joystick or Rugged Rigid Grip) 3. Protocol for interface to Command & Control System All controllers offer Built-in Test for remote diagnostic and are configured for optional additional controllers or remote control		
PAYLOAD SPECIFICATIONS		
System type:	Enhanced video stabilization	
Pan Range:	Continuous 360° AZ rotation	
Tilt range:	+/-90° elevation movement, including stow position	
Colour:	Low Gloss Plastic Sand. Custom colour upon request.	
SYSTEM INTERFACE		
Video format:	SDI	
Video streaming:	H.264 in HD with PIP or 2 video streams	
Data:	Radar cursor / ARPA target / AIS over NMEA 0183 via RS422 or RS232	
Control:	Over IP network	
ENVIRONMENTAL		
Ingress Protection Mark:	IP67	
Compliant to:	MIL-STD 810 & MIL-STD 461	
Operational temperature:	-20°C to +55°C	
WEIGHT AND DIMENSIONS		
Weight:	≤55kg	
Diameter payload ² :	400mm	
Height payload ² :	648mm	
POWER REQUIREMENTS		
Voltage:	24 to 36VDC	
Max. Consumption:	420W	
OTHER OPTIONS AND ACCESSORIES		
Other sensors: Contact us with your specific requirements.		

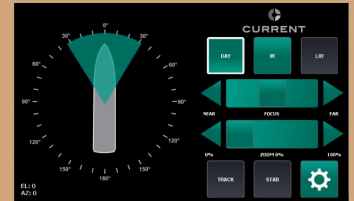
¹ theoretical calculation using Johnson's criteria & not accounting for atmospheric attenuation - ² Larger movement space required.



CONTROL SOLUTIONS



1. Video GUI



2. Control GUI



3. Protocol for interface to Command & Control System



2-Button Joystick



Rugged Rigid Grip

Specifications subject to change or improvement without notice. All Night Navigator sales are conditional to Canadian export license approval – April 21



CURRENT

CURRENT Scientific Corporation – 2933 Murray Street, Port Moody, BC, V3H 1X3, CANADA

Tel: +1 604 461 5555 – sales@currentcorp.com – www.currentcorp.com