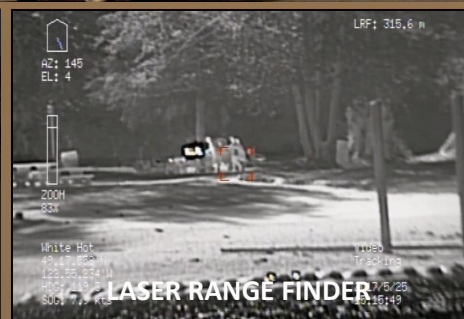
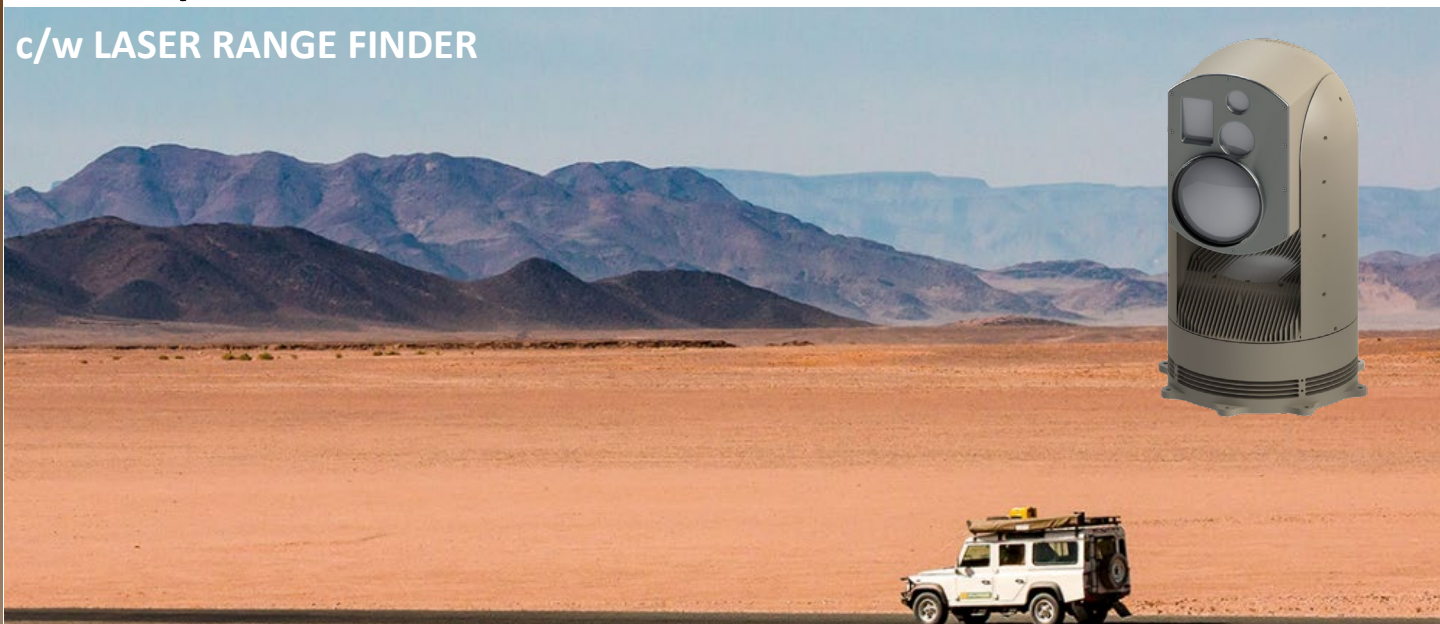


CS 8087

Border / Coastal Surveillance

c/w LASER RANGE FINDER

CS 8000 Series



Electro-Optical / Infra-Red camera system

c/w Full HD Cooled Thermal & Laser Range Finder

CURRENT SECURITY electro-optical infrared cameras are the new generation of rugged and low maintenance turrets for land-based missions. The **CS 8087** is a single payload integrating a **MWIR cooled thermal imager**, **High-Definition Day/Low light camera** and **Laser Range Finder** for surveillance and intelligence, as well as border surveillance and critical infrastructure surveillance applications. It is controlled through IP network on board or remotely. This COTS system is built to MIL Std.

APPLICATIONS

- Land Based Security
- Coastal surveillance
- Border surveillance
- Critical and Infrastructure Surveillance Applications
- Port Security
- Facility Protection
- Wind Turbine Fields

BENEFITS

- **Rugged & low maintenance** design
- **Zooms 80x** in MWIR Cooled Thermal and 360x in HD day
- **Detects** a NATO target over 20km, night and day
- **Provides a clear, highly detailed image**, in HD day camera, even into the digital zoom range
- **Day Camera selection:** HD, 4K, 800mm or 1000mm
- **Increases object detection** in low level of light with best of class low light sensitivity
- **Measures** the distance to target with the Integrated Laser Range Finder
- **Tracks** third party sensor targets
- **Video Tracking**
- **Streams H.264** (HD) video with PiP or two video streams and **communicates digitally** over IP network (Ethernet)
- **Outputs video in dedicated coax cable in SDI**
- **Enables Picture in Picture (PiP)** of two live video signal outputs (zoom synchronized or independent)
- **Single LRU** with no junction boxes or interface modules simplifies installations and retro fits, while reducing maintenance
- **Standard mounting and cabling** for all CS 8000 series enables ease of payload swaps and future upgrades
- **Designed to withstand marine environmental conditions** and proven by over 15 years and hundreds of successful operating installations worldwide

CURRENT Scientific Corporation – Tel: +1 604 461 5555 – sales@currentcorp.com

www.currentcorp.com



CURRENT