

RUGGED. MARITIME. GYRO-STABILIZED. LOW MAINTENANCE

NN 2000 Series



### Electro-Optical/Infra-Red camera system

The Night Navigator™ 2015 is a rugged, low maintenance, compact electro-optical system designed for yachts, commercial, leisure and paramilitary end users. Mast mounted payload, this imaging system offers exceptional performances. It integrates a **LWIR uncooled thermal imager** and a **HD day camera / low light** in a **gyro-stabilized sensor platform**. It can be controlled from the bridge of a ship or through IP network in a control room or remote location. This COTS system is built to MIL Std.

### APPLICATIONS

- Safe navigation at night and in uncharted waters
- Safety and security at anchor and in the harbour
- Tracking of potential threat or man overboard
- Situational awareness
- Unmanned Surface Vessels operation
- Autonomous Vessels
- Maritime SAR
- Anti-smuggling operations

### BENEFITS

- **Rugged**, marine, **low maintenance** design
- **Provides a clear, highly detailed image**, in HD day, even into the digital zoom range
- **Detects** a NATO target over 3km, night and day
- **Increases object detection** in low level of light with best of class low light sensitivity
- **Tracks** Radar cursor, ARPA Target, AIS and video targets
- **Streams H.264** (HD) video with PIP or two video streams and **communicates digitally** over IP network (Ethernet)
- **Outputs video in dedicated coax cable to the bridge in SDI**
- **Enables Picture in Picture (PIP)** of two live video signal outputs (zoom synchronized or independent)
- **Single payload** with no junction boxes or interface modules simplifies installations and retro fits, while reducing maintenance
- **Standard mounting and cabling** for all Night Navigator 2000 series enables ease of payload swaps and future upgrades
- **Designed to withstand marine environmental conditions** and proven by over 15 years and hundreds of successful operating installations worldwide



## SYSTEM FEATURES

### THERMAL CAMERA

Spectral range:	8 – 14 µm Uncooled thermal imager
Sensor type:	LWIR (Microbolometer)
Resolution:	640x480 pixels
Field of View:	17.6° Fixed FoV
Zoom:	4x digital zoom
Frequency:	30 fps, full frame rate for export
Detection range <sup>1</sup> :	NATO target over 3km / Human over 1km

### DAY / LOW LIGHT CAMERA

Sensor type:	1/2.8" CMOS
Field of View:	63° to 2.3° FoV in HD mode, 1080p30
Optical zoom:	30x continuous
Digital zoom:	12x continuous
Window coating:	Hydrophobic

### LOW LIGHT HD CAMERA (FUNCTION)

Sensor type:	1/2.8" CMOS
Low light sensitivity:	0.0015 Lux in B&W mode

### RADAR CURSOR, ARPA & AIS TARGET TRACKING

Slew-to-cue allows target detected from the Radar and AIS to be tracked automatically by the EO/IR. Interface between Radar and AIS over NMEA0183 communication standard in RS232 or RS422, through supplied Network Interface Box. Ship GPS data is also fed through NMEA 0183 communication to register and display the ship's position in Latitude, Longitude, Date, Time and Speed over Ground.

### CONTROLLER: HARDWARE OR GUI, IP BASED AND REMOTE-CONTROLLED SOLUTIONS (OPTIONS)

- 1. Video GUI** with optional USB joystick (two-button joystick): video and control combined with panel PC / Laptop.
- 2. Control GUI (Graphical User Interface)**, either on **dedicated touchscreen** display (Panel PC) or as pop up window in PC; with optional USB joystick (two-button joystick)
- 3. Compact controller** integrating joystick and 2.4" display for orientation & troubleshooting.
- 4. Protocol for interface to Command & Control System**

All controllers offer Built-in Test for remote diagnostic and are configured for optional additional controllers, remote control, and autonomous navigation.

### PAYLOAD SPECIFICATIONS

System type:	3 axis gyro stabilization <sup>2</sup> c./w. enhanced video stabilization
Pan Range:	Continuous 360° AZ rotation
Tilt range:	+/-90° elevation movement, including stow position
Colour:	Matterhorn White - gloss. Alexseal T9123. Custom colour upon request.

### SYSTEM INTERFACE

Video format:	SDI
Video streaming:	H.264 in HD with PiP or 2 video streams accessed via net0 and net1
Data:	Radar cursor / ARPA target / AIS over NMEA 0183 via RS422 or RS232
Control:	Over IP network

### ENVIRONMENTAL

Ingress Protection Mark:	IP67
Compliant to:	MIL-STD 810 & MIL-STD 461
Operational temperature:	-20°C to +55°C

### WEIGHT AND DIMENSIONS

Weight:	<12kg
Diameter payload <sup>3</sup> :	210mm
Height payload <sup>3</sup> :	322mm

### POWER REQUIREMENTS

Voltage:	24 to 36VDC
Max. Consumption:	210W

### OTHER OPTIONS AND ACCESSORIES

Other sensors: Contact us with your specific requirements.

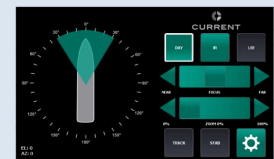
<sup>1</sup> theoretical calculation using Johnson's criteria & not accounting for atmospheric conditions / <sup>2</sup> resolved by 2 axis positioning / <sup>3</sup> Larger movement space required



## CONTROL SOLUTIONS



### 1. Video GUI



### 2. Control GUI



### 3. Compact Controller



### 4. Protocol for interface to Command & Control System



2-Button Joystick

Rugged Rigid Grip



# CURRENT

CURRENT Scientific Corporation – 2933 Murray Street, Port Moody, BC, V3H 1X3, CANADA

Tel: +1 604 461 5555 – sales@currentcorp.com – [www.currentcorp.com](http://www.currentcorp.com)