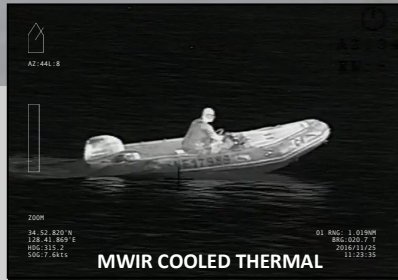


NN 3050

RUGGED. MARITIME. GYRO-STABILIZED. LOW MAINTENANCE

NN 3000 Series



Electro-Optical/Infra-Red camera system

The Night Navigator™ 3050 is a rugged, low maintenance, compact electro-optical system designed for yachts, commercial, leisure and paramilitary end users. Mast mounted payload, this imaging system offers exceptional performances. It integrates a **MWIR cooled thermal imager** and a **HD day camera / low light** in a **gyro-stabilized sensor platform**. It can be controlled from the bridge of a ship or through IP network in a control room or remote location. This COTS system is built to MIL Std.

APPLICATIONS

- Safe navigation at night and in uncharted waters
- Safety and security at anchor and in the harbour
- Tracking of potential threat or man overboard
- Situational awareness
- Unmanned Surface Vessels operation
- Autonomous Vessels
- Maritime SAR
- Anti-smuggling operations
- ISR (Intelligence, Surveillance and Reconnaissance)
- EEZ (Exclusive Economic Zone) protection
- Long-Range Surveillance

BENEFITS

- **Rugged**, marine, **low maintenance** design
- **Zooms** 56x in MWIR uncooled thermal and 360x in HD day
- **Detects** a NATO target over 14km, night and day
- **Provides a clear, highly detailed image**, in HD day, even into the digital zoom range
- **Increases object detection** in low level of light with best of class low light sensitivity
- **Tracks** Radar cursor, ARPA Target, AIS and video targets
- **Streams H.264** (HD) video with PiP or two video streams and **communicates digitally** over IP network (Ethernet)
- **Outputs video in dedicated coax cable to the bridge in SDI**
- **Enables Picture in Picture (PiP)** of two live video signal outputs (zoom synchronized or independent)
- **Single payload** with no junction boxes or interface modules simplifies installations and retro fits, while reducing maintenance
- **Standard mounting and cabling** for all Night Navigator 3000 series enables ease of payload swaps and future upgrades
- **Designed to withstand marine environmental conditions** and proven by over 15 years and hundreds of successful operating installations worldwide

CURRENT Scientific Corporation – Tel: +1 604 461 5555 – sales@currentcorp.com

www.currentcorp.com



CURRENT