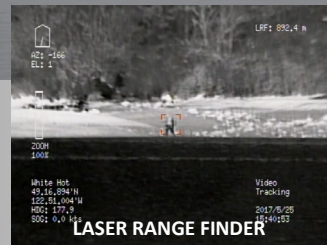
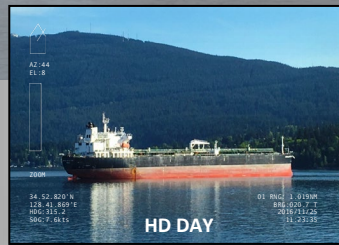
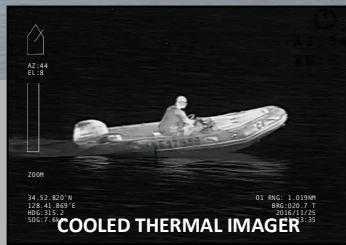


RUGGED. MARITIME. GYRO-STABILIZED. LOW MAINTENANCE

c/w LASER RANGE FINDER

NN 4000 Series



Electro-Optical/Infra-Red camera system c/w Laser Range Finder

The Night Navigator™ 4067 is a rugged, low maintenance, compact electro-optical system designed for military and paramilitary end users. Mast mounted payload, this imaging system offers exceptional performances. It integrates a **MWIR cooled thermal imager** and a **High-Definition Day / low light camera** and **Laser Range Finder** in a **gyro-stabilized** sensor platform. It can be controlled from the bridge of a ship or through IP network in a control room or remote location. This COTS system is built to MIL Std.

APPLICATIONS

- ISR (Intelligence, Surveillance and Reconnaissance)
- EEZ (Exclusive Economic Zone) protection
- Long-Range Surveillance
- Unmanned Surface Vessels operation
- Autonomous Vessels
- Maritime SAR
- Safety and security at anchor and in the harbour
- Tracking of potential threat or man overboard
- Situational awareness
- Anti-smuggling operations

BENEFITS

- **Rugged, marine, low maintenance** design
- **Zooms 80x** in cooled thermal and **360x** in HD day
- **Detects** a NATO target over **15km**, night and day
- **Provides a clear, highly detailed image**, in HD day, even into the digital zoom range
- **Increases object detection** in low level of light with best of class low light sensitivity
- **Measures** the distance to target with the Integrated Laser Range Finder
- **Tracks** Radar cursor, ARPA Target, AIS and video targets
- **Streams H.264** (HD) video with PiP or two video streams and **communicates digitally** over IP network (Ethernet)
- **Outputs video in dedicated coax cable to the bridge in SDI**
- **Enables Picture in Picture (PiP)** of two live video signal outputs (zoom synchronized or independent)
- **Single payload** with no junction boxes or interface modules simplifies installations and retro fits, while reducing maintenance
- **Standard mounting and cabling** for all Night Navigator 4000 series enables ease of payload swaps and future upgrades
- **Designed to withstand marine environmental conditions** and proven by over 15 years and hundreds of successful operating installations worldwide